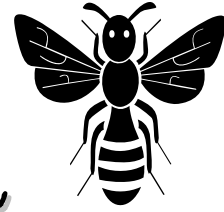




BENEFITS BUZZ



Bristol, Lincoln, Monkton, New Haven, Starksboro, Mt. Abraham Union High School, ANESU

June 2009

Blue Cross & Blue Shield:

July 2009 is open enrollment. Now is your chance to enroll or make changes. Examples of some changes would include enrollment, adding dependents, or switching to another one of the plans. An enrollment form is required for all changes. Please call me to request a form. (January 2010 is the next available open enrollment period.)

Northeast Delta Dental:

July 2009 is open enrollment. Now is the time to enroll or make changes. An enrollment form is required for all changes. (January 2010 is the next available open enrollment period.)

Reminder: There is a maximum \$1,000.00 benefit for each family member enrolled. The plan year starts in July and ends the following June.

Direct Deposit:

If you change banking institutions, please be sure to let Payroll know by completing a Direct Deposit Change Form.

Address Change:

Please check the address on your paycheck to make sure it is accurate. If not, you will need to complete a change of address form.

Lump Sum:

For those of you who submitted Lump Sum Payroll Requests.....Your lump Sum Paycheck will be dated June 26, 2009. Your first paycheck in the 2009-2010 school year is September 4, 2009.

ANESU WEBSITE

I urge you to check out our Website at www.mttabe.k12.vt.us/anesu/ under the Human Resources tab we have provided you with benefit information and several printable forms.

OTHER NEWS FROM THE CENTRAL OFFICE.....

Educator License Renewal:

Reminder to professional staff with educator license expiration of 6/30/09 to submit documentation (photocopy) of renewed certification for your personnel file. Please send to the attention of N. Bachand. This information is *not* forwarded by the VT DOE Licensing Office to the employing school district and should be on file before the start of the 09-10 school year. Contact our office without delay if for some reason you anticipate a problem complying with this request. Thank you.

Reminder: Central office does not close for the summer, we are here Monday-Friday 8:00 am - 4:30 pm.

As always, contact me with any questions you may have. My telephone number is 453-3657, ext. 12 and my e-mail address is bjconner@anesu.org



This is the last Benefits Buzz memo you will receive until fall. Enjoy the summer!

BobbiJo Conner